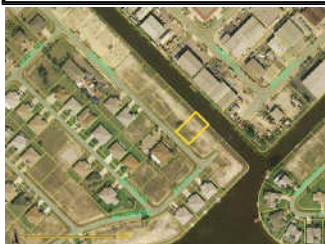


Client Detail with Addl Pics Report

Listings as of 04/24/08 at 3:37pm

Active 04/24/08	Listing # 200824166 County: Lee	1051 SE 10th St Cape Coral, FL 33990-3010	Listing Price: \$125,000
------------------------	------------------------------------	---	--------------------------



Prop Type	Lot/Land/Boat Dock	Prop Subtype(s)	Commercial Lot
GEO Area	CC14 - Cape C	Subdivision	Cape Coral
		Price/Acre	\$543,478.26
PID	194424C1007330250	Lot Sq Ft (approx)	10019 ((Seller))
		Lot Acres (approx)	0.230

Directions Country Club Blvd North past Vetrans' Memorial Pkwy to Right on SE 10th St. Property is on the Left.
Property Information GULF ACCESS COMMERCIAL LOT WITH SEAWALL, ONE BRIDGE TO RIVER. CENTRAL WATER AND SEWER.

Status Type	Resale Property	Waterfront	Seawall, Navigable, Canal
Boat/Dock Info	None	Descrip.	
Lot Size- Frontage	80	Short Sale	No
Lot Size- Back	80	Lot Size- Left	125
Rear Exposure	NE	Lot Size- Right	125
Block	733	Legal Unit	22
Zoning	Vacant Commercial	Lot	0
Canal Width	81-120	Useage	Commercial
On Site Utilities	Cable, Electric, Phone Line, Trash Removal, Water	Water	Assessment Paid, Central
View	Canal	Sewer	Assessment Paid, Central
Available	Aerial	Lot Description	City, County, Regular, Other/See Remarks
Documents		Irrigation	Other/See Remarks
Restrictions	Other/See Remarks	Special Info	Other/See Remarks
Possession	At Closing	Terms	Buyer Finance/Cash
Road	Paved Road		

Presented By:	Mark D Hetrick Primary: 239-936-5478 Secondary: Other: E-mail: mark@listinmls.com Web Page: http://www.listinmls.com	List in MLS Realty, LLC 2367 Woodland Ter. Fort Myers, FL 33907 239-936-5478 See our listings online: http://www.listinmls.com
----------------------	---	--



April 2008

Information has not been verified, is not guaranteed, and is subject to change.
 Copyright ©2008 Rapattoni Corporation. All rights reserved.

